

> DUAL CREDIT GUIDEBOOK 2024-25

GET A HEAD START ON YOUR
POST-SECONDARY JOURNEY
BY ENROLLING IN LETHBRIDGE
COLLEGE'S DUAL CREDIT COURSES.

LEARN MORE AT

lethbridgecollege.ca/dual-credit


Lethbridge
College

BE READY.

> DUAL CREDIT COURSES



Get a head start on your post-secondary journey by enrolling in Lethbridge College's dual credit courses.

Whether you choose to continue your studies or head into the workforce after your high school graduation, these courses will help you be ready for an easier transition to whatever happens next.

COURSES CATEGORIES

- **ARTS + MEDIA**

CMM1185 • DCM1164 • DCM1167 • RSR1160

- **BUSINESS**

AGS1150 • BUS1170 • BUS1177 • MKT1152

- **COMMUNICATION + SOCIAL**

COM1162 • ENG1150 • ENG1159 • INS1155 • PSC1165 • PSY1160

- **HEALTH + WELLNESS**

BIO1156 • BIO1160 • CSP1150 • TRG1150

- **JUSTICE + HUMAN SERVICES**

COM1165 • CJP1160 • ECE1151 • ECE1155 • EDU1153 • HSP1151 • LAW1150 • LAW1177

- **MATH + ENGINEERING**

CAD1160 • IDM1179 • MTH1150

- **SCIENCES**

AGS1100 • BIO1167 • BIO1168 • BIO1172 • BIO1175 • BIO1195 • GEO1166 • RRM1197
RRM2252 • RRM2253

- **TRADES**

TRA1131 • TRA1132 • TRA1133 • TRA1134 • TRA1135

LEARN MORE AT

lethbridgecollege.ca/dual-credit

> WHAT IS DUAL CREDIT?

In Alberta, Dual Credit programming invites high school students in Grades 10-12 to take approved post-secondary courses, earning them credit at both levels. When taking a Dual Credit course with Lethbridge College, you are considered both a high school AND college student.

Dual Credit programming is an excellent way for you to:

- Experiment with subjects that might not be available at your school.
- Learn more about the college learning experience and environment.
- Meet new people and join our college community.
- Earn credit in courses for application in future studies.
- Connect with advisors to plan your future post-secondary studies.

COURSE OFFERINGS

For the 2024/2025 academic year, Lethbridge College has over 40 Dual Credit courses approved by Alberta Education. As we continue to build new and exciting pathways for learners, additional courses are also at various stages in the application process.

Courses are selected to run as Dual Credit programming based on a number of factors, including student interest and format flexibility. If you have a course or area of interest you'd like to see more programming options, please contact our team to discuss, as we are always looking to add to the lineup.

This guidebook contains detailed information on all approved and pending Dual Credit courses offered through Lethbridge College.

> GETTING STARTED

STEP 1 - TALK TO YOUR SCHOOL

- As tuition is sponsored by schools/divisions, the first step in the process requires students to discuss their eligibility and internal application process at the school level.
- Please note, Dual Credit course offerings may differ throughout schools/divisions.

STEP 2 - APPLY TO COLLEGE

- Once you have been approved to take a Dual Credit course by your school/division, you will apply as an open studies student to Lethbridge College.
- A promo code will be provided to you through your school/division Dual Credit contact in order to waive the application fee.

STEP 3 - BE READY

- Upon acceptance, you will receive official communication to the email you used to apply. Your acceptance package will also include information on how to access your Lethbridge College email, course materials on Canvas, and important contacts for your Dual Credit journey.
- Please monitor Canvas and your college email for communication from your instructor.

Q & A

HOW ARE COURSE OFFERINGS ORGANIZED?

- Course overviews are listed in this document alphabetically by course code and are not based on course categories.

WHAT DOES “ONLINE DELIVERY METHOD” MEAN?

- Most Dual Credit courses are offered online, in an asynchronous format to allow students to tackle course work at times that work best for their schedule.
- However, there are several courses with mandatory on-campus lab components. Please take note of delivery method when selecting a course.

WHAT ARE COURSE “PRE-REQUISITES”?

- Some courses have entrance requirements to ensure students have the necessary experience to set themselves up for success with course content and assessments.
- If you are unsure whether you meet a course’s pre-requisites, please contact our advising team.

SHOULD I PURCHASE REQUIRED EQUIPMENT AND MATERIALS NOW?

- This package is meant to provide students, parents and schools with the most accurate information on Dual Credit offerings and processes at the time of distribution; however, content is subject to change. Please wait to purchase any required equipment and materials until confirmed with your instructor.
- All courses require a computer and Internet access.

WHO CAN I CONTACT WITH QUESTIONS?

- Contact information for relevant departments is located on the last page of this document.

> SUPPORTS

Lethbridge College has a variety of supports and services to help guide you to success. Success is not only the responsibility of the student, but rather a shared responsibility between the student, the instructor and the school.

Here is the list of departments available to make sure that you have the support you need to succeed.

CAREER + ACADEMIC ADVISING

Provides information on:

- How Dual Credit courses can help you complete a program
- Possible program options and future career paths
- Academic expectations and grading scales
- Lethbridge College policies and procedures

Contact: advisor@lethbridgecollege.ca • 403.320.3366

LEARNING CAFÉ

Here to help with:

- Time management
- Personal management
- Studying efficiently
- Bridging knowledge gaps
- Written assignments
- Test-taking skills

Contact: learningcafe@lethbridgecollege.ca • 403.382.6952

ACCESSIBILITY SERVICES

Available to discuss:

- Disability advising
- Requests for academic accommodations
- Disability-related history and potential challenges
- Additional supports

Contact: accessibilityservices@lethbridgecollege.ca • 403.320.3202 Ext. 5400

BUCHANAN LIBRARY

Ready to assist with:

- Research materials required for class assignments
- Quiet places to work on class projects
- Access to online databases

Contact: buchananlibrary@lethbridgecollege.ca • 403.320.3352

2024/2025 OFFERING SCHEDULE

Course	Fall (Sept. - Dec.)	Winter (Jan. - May)
AGS1100 - Introduction to Agriculture		✓
AGS1150 - Agriculture Finance		✓
BIO1156 - Wellness & Health Issues		✓
BIO1160 - Anatomy and Physiology I		✓
BIO1167 - Botany	✓	✓
BIO1168 - Zoology	✓	✓
BIO1172 - Ecology	✓	✓
BIO1175 - Animal Science	✓	
BIO1195 - Introduction to Aquaponic Principles		✓
BUS1170 - Introduction to Management	✓	
BUS1177 - Entrepreneurship		✓
CAD1160 - Graphic Communications	✓	
CJP1160 - Introduction to the Criminal Justice System		✓
CMM1185 - The Principles of Animation		✓
COM1162 - Interpersonal Relationships & Communication	✓	✓
COM1165 - Public Safety Communications/Interpersonal Relations	✓	
CSP1150 - Medical Terminology/Anatomy & Physiology	✓	
DCM1164 - Introduction to Design Software and Photography	✓	
DCM1167 - Marketing Fundamentals for Media		✓
ECE1151 - Health, Nutrition and Safety	✓	
ECE1155 - Introduction to Early Childhood Education	✓	✓
EDU1153 - Foundations of Educational Assistance	✓	
ENG1150 - Composition	✓	✓
ENG1159 - Writing for the Workplace	✓	✓
GEO1166 - Physical Geology	✓	✓
HSP1151 - Family Systems and Development	✓	
IDM1179 - Design Fundamentals	✓	
LAW1150 - Environmental Law	✓	
LAW1177 - Introduction to Procedural Law in Canada <i>*pending approval</i>	✓	
INS1155 - Introduction to Indigenous Studies	✓	✓
MKT1152 - Commodity Marketing	✓	
MTH1150 - Engineering Math I	✓	
PSC1165 - Canadian Government	✓	
PSY1160 - Introduction to Psychology		✓
RRM1197 - Spatial Information Techniques	✓	✓
RRM2252 - Water Resources	✓	✓
RRM2253 - Soil Resources	✓	✓
RSR1160 - Research and Writing for New Media	✓	
TRA1131 - Introduction to the Trades <i>*reserved for select divisions</i>	✓	✓
TRA1132 - Introduction to Transportation Trades <i>*reserved for select divisions</i>		✓
TRA1133 - Introduction to Electrical Trades <i>*reserved for select divisions</i>	✓	
TRA1134 - Introduction to Construction Trades <i>*reserved for select divisions</i>	✓	
TRA1135 - Introduction to Culinary Trades <i>*reserved for select divisions</i>		✓
TRG1150 - Introduction to Therapeutic Recreation	✓	

> IMPORTANT DATES

APPLICATION DEADLINES

Dual Credit courses are scheduled to run in both the fall and winter semesters.

Once approved to take a course by your school/school division, you will need to apply using the promo code they supply. The following deadlines allow our teams adequate time to prepare for your arrival.

In the event you are past the application deadline, please contact our team to discuss options.

Deadline	Date
Fall Semester Applications	June 14, 2024
Winter Semester Applications	Nov. 29, 2024

SEMESTERS

Dual Credit semesters are designed to fit within your high school schedule. As a result, the winter semester is slightly delayed, compared to the rest of the college.

Please review the following semester dates:

Semester	First Day	Last Day
Fall	Sept. 4, 2024	Dec. 6, 2024
Winter	Jan. 27, 2025	May 2, 2025

AGS1100 - FOUNDATIONS IN AGRICULTURE

Offered in the Winter semester

Delivery Method: Online asynchronous + several on-campus labs

Total Hours: 75

College Credits: 3

High School Credits: 5

Pre-Requisites: None

Materials Cost: None

Course Description:

An introduction to the primary agriculture industries in Southern Alberta including agronomy, animal science and agriculture business. Discussions and projects will include identification of basic agriculture science and economic principles, interaction between industries and evolving career opportunities.

Course Outcomes:

1. Explain the role of agriculture in maintaining environmental soundness and sustainability including land usage, energy, water, and soil.
2. Explain the impact of agriculture management practices on plants and plant health as well as animals and animal welfare.
3. Compare food and agriculture commodities produced in southern Alberta including composition, nutrients, food safety, security, and processing techniques.
4. Examine agriculture technologies, including automation, robotics, biotechnology, precision agriculture, and genetics.

Assessments:

- Lab Assignments
- Quizzes
- Exams

Required Equipment & Materials:

- None

Transferability:

- *Approved Elective for:* General Arts and Sciences
- *External Transfer Equivalent at:* No transfer opportunities offered at this time.



This course is included in the lineup of Southern Alberta Collegiate Institute programming.

AGS1150 - AGRICULTURE FINANCE

Offered in the Winter semester

Delivery Method: Online asynchronous

Total Hours: 45

College Credits: 3

High School Credits: 5

Pre-Requisites: None

Materials Cost: None

Course Description:

An introduction to finance concepts and their application in an agricultural context. Topics include the interpretation of financial information, terminology, investment analysis, sensitivity analysis and asset valuation. Conceptual learning will be applied with practical computer lab exercises.

Course Outcomes:

1. Interpret various financial statements and ratios.
2. Calculate depreciation and amortization schedules.
3. Demonstrate the use of investment evaluation techniques.
4. Estimate an economic valuation of assets and compare to market valuation.
5. Conduct sensitivity analysis.
6. Integrate finance concepts and skills into software applications.

Assessments:

- Lab Assignments
- Exams

Required Equipment & Materials:

- Calculator with exponential function
- Microsoft Excel

Transferability:

- *Required course for:* Agriculture Science
- *External Transfer Equivalent at:* University of Lethbridge

BIO1156 - WELLNESS & HEALTH ISSUES

Offered in the Winter semester

Delivery Method: Online asynchronous

Total Hours: 45

College Credits: 3

High School Credits: 5

Pre-Requisites: None

Materials Cost: \$50 (approx.)

Course Description:

An overview of the dimensions of wellness, including physical, emotional, social, intellectual, spiritual, occupational and environmental wellness. A focus on the concepts of the dimensions and specific areas of health and wellness within the context of community including cost to the Health Care System. The analysis, explanation and identification of individualized strategies of personal health issues and dimensions of wellness to build resiliency and take responsibility for one's own health.

Course Outcomes:

1. Define dimensions of wellness and discuss interconnection of each for overall health and wellness.
2. Apply transtheoretical model of change to wellness dimensions for personal and professional scenarios.
3. Promote health by applying strategies in components of health-related fitness, exercise and nutrition.
4. Discuss psychosocial dimensions of wellness and identify strategies for improving personal and professional balance for psychosocial health.
5. Recognize the effects of stress on dimensions of wellness, and demonstrate, compare and contrast strategies to manage stress.
6. Identify and discuss current issues related to health and wellness, including health and safety issues.
7. Discuss and plan strategies to build resiliency in personal and professional wellness that assist in healthy active aging.

Assessments:

- Reflections
- Quizzes
- Assignments

Required Equipment & Materials:

- Textbook

Transferability:

- *Required course for:* Practical Nurse
- *Approved Elective for:* General Arts and Science, Exercise Science
- *External Transfer Equivalent at:* Athabasca University, Concordia University of Edmonton, King's University, MacEwan University, Mount Royal, Norquest College, Northern Lakes College, University of Lethbridge, University of Regina

BIO1160 - ANATOMY AND PHYSIOLOGY I

Offered in the Winter semester

Delivery Method: Online asynchronous + several optional on-campus labs

Total Hours: 60

College Credits: 3

High School Credits: 5

Pre-Requisites: BIO 30

Materials Cost: \$200 (approx.)

Course Description:

A comprehensive study of anatomical terms, body organization, basic chemistry, histology, skeletal system, muscular system, digestive system and the reproductive system. Labs include study of the skeleton, muscles and histology.

Course Outcomes:

1. Explain the basic structure and function of the major skeletal, muscular, digestive and reproductive systems at the biochemical, cellular, tissue, organ and organ system levels.
2. Recognize and name the detailed structures of the skeletal, muscular, digestive and reproductive systems using scientific and medical terminology.
3. Use compound and dissection microscopes to view tissue structures.
4. Work in group and individualized learning settings with anatomical materials and models.
5. Use anatomical language to describe body organization and the location of various body parts, and give examples of practical applications where such language is used and is necessary.

Assessments:

- Exams
- Case Studies
- Discussion Posts

Required Equipment & Materials:

- Various textbooks

Transferability:

- *Required course for:* Bachelor of Nursing, Practical Nursing, Massage Therapy
- *Approved Elective for:* Criminal Justice - Corrections, Criminal Justice - Policing, General Arts and Science
- *External Transfer Equivalent at:* Athabasca University, Bow Valley College, Concordia University of Edmonton, King's University, MacEwan University, Mount Royal University, SAIT, University of Alberta, University of Calgary, University of Lethbridge, University of Regina

BIO1167 - BOTANY

Offered in the Fall + Winter semesters

Delivery Method: Online asynchronous + optional on-campus labs

Total Hours: 75

College Credits: 3

High School Credits: 5

Pre-Requisites: Grade 11/12

Materials Cost: \$150 (approx.)

Course Description:

An introduction to plant evolution and diversity with a focus on angiosperms (flowering plants). Emphasis is on plant anatomy, physiology and the effects of abiotic and biotic factors on plant growth and development.

Course Outcomes:

1. Describe the functional and adaptive significance of plant cells, tissues and organs.
2. Illustrate the evolutionary origin and the major phylogenetic branches of plants.
3. Outline the mechanisms involved in the movement of water and organic matter in plants.
4. Describe biotic and abiotic factors that affect plant growth and development.
5. Compare and contrast the processes of photosynthesis and cellular respiration in plants.
6. Explain basic principles of genetics relating to plant propagation and survival.

Assessments:

- Lab Assignments
- Quizzes
- Lab Exams
- Final Exam

Required Equipment & Materials:

- Various textbooks

Transferability:

- *Required course for:* Natural Resource Compliance, Renewable Resource Management, Agriculture Sciences, Environmental Assessment and Restoration
- *External Transfer Equivalent at:* Concordia University of Edmonton, Medicine Hat College, University of Lethbridge



This course is included in the lineup of PEAKS Campus Collegiate + Southern Alberta Collegiate Institute programming.

BIO1168 - ZOOLOGY

Offered in the Fall + Winter semesters

Delivery Method: Online asynchronous

Total Hours: 75

College Credits: 3

High School Credits: 5

Pre-Requisites: None

Materials Cost: \$80 (approx.)

Course Description:

A study of the orders and major families of mammals and birds with an emphasis on evolutionary biology, ecology, distribution and behaviour.

Course Outcomes:

1. Explain the science of zoology.
2. Apply the scientific method.
3. Discuss the concept of evolution as a vector for change.
4. Apply zoological taxonomy to classify animals.
5. Explain the structural and functional adaptations of mammals and birds.
6. Discuss the digestive system adaptations across various trophic groups.
7. Discuss thermoregulatory adaptations.
8. Describe differing mammalian and avian reproductive strategies.
9. Discuss the evolution and adaptive radiation of the Aves.
10. Explain the various avian adaptations to flight.

Assessments:

- Assignments
- Quizzes
- Exams

Required Equipment & Materials:

- Various textbooks

Transferability:

- *Required course for:* Natural Resource Compliance, Renewable Resource Management, Environmental Assessment and Restoration
- *Approved Elective for:* General Arts and Science
- *External Transfer Equivalent at:* Athabasca University, Concordia University of Edmonton, The King's University, MacEwan University, Mount Royal University, University of Lethbridge, University of Regina



This course is included in the lineup of PEAKS Campus Collegiate programming.

BIO1172 - ECOLOGY

Offered in the Fall + Winter semesters

Delivery Method: Online asynchronous

Total Hours: 75

College Credits: 3

High School Credits: 5

Pre-Requisites: None

Materials Cost: \$200 (approx.)

Course Description:

A study of the interrelationships between living organisms and their environment with an emphasis on elements of the physical world which shape and define ecosystems.

Course Outcomes:

1. Explain the development of ecology as a science and the importance of ecological relationships.
2. Analyze the role and importance of the physical environment in relation to the conditions for life.
3. Describe population ecology and summarize the mechanisms that affect population sizes.
4. Summarize the different types of interspecific and intraspecific interactions that occur.
5. Examine community ecology and the factors that influence it.
6. Describe ecosystem ecology and the processes involved.
7. Discuss foundational biogeography concepts with respect to terrestrial and aquatic ecosystems.

Course Assessments:

- Research Reports
- Quizzes
- Lab Assignments
- Exams
- Homework

Required Equipment & Materials:

- Various textbooks

Transferability:

- *Required course for:* Natural Resource Compliance, Renewable Resource Management, Environmental Assessment and Restoration
- *External Transfer Equivalent at:* Concordia University of Edmonton, Medicine Hat College, University of Lethbridge



This course is included in the lineup of PEAKS Campus Collegiate programming.

BIO1175 - ANIMAL SCIENCE

Offered in the Fall semester

Delivery Method: Online asynchronous + several days of on-campus labs

Total Hours: 75

College Credits: 3

High School Credits: 5

Pre-Requisites: Grade 11/12

Materials Cost: \$140 (approx.)

Course Description:

This introductory course is designed to allow students to gain a wider perspective of animal husbandry practices and the various species currently under production in Southern Alberta. The course includes a brief introduction of physiology, nutrition, reproduction and current environmental and welfare issues. Basic production principles, demonstrations and hands-on lab work are included.

Course Outcomes:

1. Summarize significance of animal production in Southern Alberta.
2. Assess farm animal welfare concerns.
3. Contrast the ruminant and monogastric digestive systems, indicating nutritional requirements and limitations associated with the appropriate stages of livestock growth and production.
4. Identify current livestock production limits, methods to improve efficiency through nutrition, housing and genetics and the role of biotechnology in animal development.
5. Explain concerns associated with non-traditional livestock.
6. Indicate how understanding animal behavior can improve production, safety, health and welfare, product quality and consumer satisfaction.
7. Identify potential food safety concerns associated with production and include prevention methods.
8. Compare level of vertical integration across primary livestock species, indicating benefits and costs.
9. Evaluate animal health and determine possible causative agents, potential treatments and progressive animal husbandry techniques to minimize losses and welfare concerns.
10. Explain how to genetically improve a population, including physical environment, fixed resources, management decisions and economics.
11. Describe the function of reproductive systems, potential production concerns and explain how management techniques can improve efficiency and economic return.
12. Contrast dairy, poultry, beef, swine and equine production.

Course Assessments:

- Reports
- Lab Assignments
- Discussions
- Quizzes
- Exams

Required Equipment & Materials:

- Textbook

Transferability:

- *Required course for:* Agriculture Science
- *External Transfer Equivalent at:* No transfer opportunities offered at this time.

BIO1195 - INTRODUCTION TO AQUAPONIC PRINCIPLES

Offered in the Winter semester

Delivery Method: Online asynchronous

Total Hours: 45

College Credits: 3

High School Credits: 5

Pre-Requisites: None

Materials Cost: None

Course Description:

An introduction and breakdown of the integrated food production system known as aquaponics. The aspects of plant physiology, fish production, waste and nutrient management, aquatic biology and ecology, water quality, biocontrol, basics of food safety in integrated production and different growing methods are covered, where plants are grown in nutrient rich water naturally fertilized by fish.

Course Outcomes:

1. Describe the basic components (fish, plants, microbes) and functions (nutrient cycles, chemistry) that make up aquaponic systems.
2. Distinguish the limitations & constraints of various aquaponic growing techniques.
3. Identify basic kits and meters available to measure water quality.
4. Identify the basic water quality parameters required to be monitored for establishing a mature aquaponics system, including pH, nutrients/micronutrients and the use of buffers/acids.
5. Diagnose common problems in plant nutrient deficiency and pest management.
6. Describe the elements, importance, and challenges of IPM (integrated pest management) for integrated food production systems.
7. Design a functional aquaponics ecosystem (eg. planning, seeding, harvesting).

Assessments:

- Quizzes
- Discussions
- Case Study
- Business Plan

Required Equipment & Materials:

- None

Transferability:

- *Required course for:* Bachelor of Agriculture Science
- *External Transfer Equivalent at:* No transfer opportunities currently offered.

BUS1170 - INTRODUCTION TO MANAGEMENT

Offered in the Fall semester

Delivery Method: Online asynchronous

Total Hours: 45

College Credits: 3

High School Credits: 5

Pre-Requisites: None

Materials Cost: \$110 (approx.)

Course Description:

The exploration of the four basic components of management: planning, organizing, leading and controlling. Includes theoretical background as well as practical application through case study analysis.

Course Outcomes:

1. Recall characteristics and functions of effective teams and apply them in their own student teamwork.
2. Analyze organizational structure and distinguish between characteristics which influence culture.
3. Apply predominant leadership and motivational theories to real life situations.
4. Use the planning and decision-making process to solve management problems.
5. Set strategic plans, goals, and objectives for organizations and your career.
6. Identify the forces for change and utilize the change process in a real-life exercise.
7. Discuss the need for managerial ethics and corporate social responsibility while exploring a corporation's (sometimes conflicting) duty to their shareholders and society at large.
8. Examine human resource management process, and how it relates to overall corporate strategy.
9. Analyze control process using an effective control system to determine required corrective actions.
10. Integrate self-analysis and reflection using critical thinking and scholarly review processes.

Assessments:

- Quizzes
- Discussions
- Case Studies
- Essays
- Exams

Required Equipment & Materials:

- Textbook

Transferability:

- *Required course for:* Business Administration, Computer Information Technology, Agriculture Sciences - Business Major
- *Approved Elective for:* Criminal Justice - Corrections, Criminal Justice - Policing, General Arts and Science
- *External Transfer Equivalent at:* Athabasca University, Bow Valley College, Concordia University of Edmonton, SAIT, University of Calgary, University of Lethbridge, University of Regina

BUS1177 - ENTREPRENEURSHIP

Offered in the Winter semester

Delivery Method: Online asynchronous

Total Hours: 45

College Credits: 3

High School Credits: 5

Pre-Requisites: None

Materials Cost: \$130 (approx.)

Course Description:

An interactive exploration of the concept of entrepreneurship and assessing one's suitability and capacity for it. Involves learning to differentiate between mere ideas and true entrepreneurial opportunities. Includes assessing the implementation of entrepreneurial endeavor and an exploration of the issues relating to new business start-up.

Course Outcomes:

1. Explore, analyze and explain the broad concept of entrepreneurship.
2. Identify and evaluate your capacity as an entrepreneur and the process to become one.
3. Relying upon a feasibility framework, differentiate and articulate the difference between a mere idea and an entrepreneurial opportunity.
4. Assess a plan of implementation of entrepreneurial endeavor.

Assessments:

- Exams
- Case Studies
- Quizzes
- Assignment & Presentation
- Essays

Required Equipment & Materials:

- Textbook

Transferability:

- *Required course for:* Business Administration, Virtual and Augmented Reality, Administrative Office Professional
- *Approved Elective for:* Computer Information Technology
- *External Transfer Equivalent at:* Athabasca University, Bow Valley College, Concordia University of Edmonton, MacEwan, SAIT, University of Alberta, University of Lethbridge, University of Regina

CAD1160 - GRAPHIC COMMUNICATIONS

Offered in the Fall semester

Delivery Method: Online asynchronous + online synchronous/on-campus labs

Total Hours: 90

College Credits: 3

High School Credits: 5

Pre-Requisites: Math 20-2, 70% or better

Materials Cost: \$150 (approx.)

Course Description:

The application of AutoCAD in the production of engineering drawings to acceptable industry standards. Incorporating the use of productivity tools and techniques for efficient CAD drawing. An introduction to 3D modeling and advanced applications and customization techniques applicable to AutoCAD.

Course Outcomes:

1. Demonstrate how to manage the AutoCAD environment, manage files, create and select objects.
2. Apply basic geometric construction and editing techniques.
3. Demonstrate effective hatching, annotation and plotting through the use of templates, creating hatching, managing annotation styles, creating annotations and applying plotting techniques.
4. Create, edit and manage blocks, external references and attribute information.
5. Apply basic 3D construction, editing and presentation techniques

Assessments:

- Power Tests
- Plot Plan Project
- 3D Activity
- In-Class Activities

Required Equipment & Materials:

- Textbook
- AutoCAD Software
- Storage Device

Transferability:

- *Required course for:* Civil Engineering Technology, Engineering Design Technology, Survey and Geospatial Engineering
- *External Transfer Equivalent at:* SAIT

CJP1160 - INTRODUCTION TO THE CRIMINAL JUSTICE SYSTEM

Offered in the Winter semester

Delivery Method: Online asynchronous

Total Hours: 45

College Credits: 3

High School Credits: 5

Pre-Requisites: ENG 20-1 or ENG 20-2

Materials Cost: \$60 (approx.)

Course Description:

An introduction into the study of Canada's criminal justice system which consists of three major agencies: the police, the courts, and the correctional system. The structure of policing, the courts, and the correctional system are examined together with the development, role and functions of each agency.

Course Outcomes:

1. Describe the structure and function of each major component of the criminal justice system in Canada.
2. Identify the importance of due process and compare and contrast the crime control and due process philosophies in the criminal justice system.
3. Compare and contrast the traditional organizational structure and function of police services with current trends in policing such as community policing and problem-oriented policing.
4. Examine current issues in Canadian policing, including the role and practice of police discretion, police misconduct, and police accountability.
5. Analyze crime trends and patterns and describe how crime is measured, using various surveys and reporting systems.
6. Explain and outline the court system in Canada.
7. Explain different philosophies of criminal sentencing and punishment and the victim's role in sentencing.
8. Describe the history of corrections in Canada and the current organizational structure.
9. Examine current correctional agencies and programs.

Assessments:

- Quizzes
- Discussion
- Exams
- Assignments

Required Equipment & Materials:

- Textbook

Transferability:

- *Required course for:* Criminal Justice - Corrections, Criminal Justice - Policing
- *External Transfer Equivalent at:* Athabasca University, Bow Valley College, College of the Rockies, Concordia University of Edmonton, Mount Royal University, University of Lethbridge, University of Regina

CMM1185 – THE PRINCIPLES OF ANIMATION

Offered in the Winter semester

Delivery Method: Online asynchronous

Total Hours: 60

College Credits: 3

High School Credits: 5

Pre-Requisites: None

Materials Cost: \$100 software (approx.)

Course Description:

A hands-on application of the principles of animation will be used to create various animations. Focus will be on understanding and applying the animation development process, including sketching and storyboard design.

Course Outcomes:

1. Compare traditional and digital animation techniques.
2. Explain the animation development process.
3. Define terms associated with animation.
4. Design character sketches and storyboards.
5. Produce animations that apply the principles of animation and various camera techniques.

Assessments:

- Labs & Discussions
- Assignments
- Midterm Project
- Final Project

Required Equipment & Materials:

- External, portable solid state drive (SSD)
- Noise cancelling headphones with mic
- 8-32GB SD memory card for camera
- DSLR Camera
- Adobe Creative Suite Software

Transferability:

- *Required course for:* Multimedia Production
- *Approved Elective for:* Computer Information Technology
- *External Transfer Equivalent at:* No transfer opportunities offered at this time.

COM1162 - INTERPERSONAL RELATIONSHIPS AND COMMUNICATION

Offered in the Fall + Winter semesters

Delivery Method: Online asynchronous

Total Hours: 45

College Credits: 3

High School Credits: 5

Pre-Requisites: None

Materials Cost: \$120 (approx.)

Course Description:

This course is designed to improve students' self-concepts and provide them with the skills to successfully relate with others on a personal, social and business basis. Designed for personal growth and attitude change, this course provides opportunities to develop communication skills, recognition and understanding of self concept, skills in enhancing interpersonal relationships, procedures for goal-setting and techniques for decision-making.

Course Outcomes:

1. Define and analyze interpersonal communication, including self-concept, perception, emotions and verbal and non-verbal messages.
2. Recognize and discuss the ways culture, gender and social roles affect interpersonal communication.
3. Demonstrate effective communication skills in personal and work environments.
4. Work to create positive interpersonal relationships in which open, honest communication and effective conflict resolution can occur.
5. Identify and demonstrate effective strategies of active listening and empathetic responding.

Assessments:

- Quizzes
- Discussion
- Applications
- Final Project
- Self-Assessments

Required Equipment & Materials:

- Textbook

Transferability:

- *Required course for:* Administrative Office Professional, Agriculture Sciences, Business Administration, Educational Assistant, Exercise Science, Medical Device Reprocessing, Multimedia Production, Pathway to English and Academic Culture, Practical Nurse, Therapeutic Recreation Gerontology, Unit Clerk
- *Approved Elective for:* General Arts and Science, Computer Information Technology
- *External Transfer Equivalent at:* Athabasca University, Bow Valley College, Concordia University of Edmonton, MacEwan, SAIT, University of Alberta, University of Lethbridge, University of Regina

COM1165 - PUBLIC SAFETY COMMUNICATIONS/INTERPERSONAL RELATIONS

Offered in the Fall semester

Delivery Method: Online asynchronous

Total Hours: 45

College Credits: 3

High School Credits: 5

Pre-Requisites: None

Materials Cost: \$90 (approx.)

Course Description:

The development of professional and personal communication skills. An emphasis on actively listening, communicating verbally and non-verbally, collaborating with others, and presenting effectively. A focus on recognizing personal strengths to function in a team setting. Relevant public safety topics are used as a basis for further research and presentation.

Course Outcomes:

1. Identify and develop personal strengths and competencies for effective performance in public safety careers.
2. Demonstrate constructive verbal and non-verbal communication techniques.
3. Describe professionalism in context of public service and relate this to public safety competencies.
4. Apply effective teamwork strategies to collaboratively solve problems and deal effectively with interpersonal issues.
5. Research, prepare and deliver presentations on justice-related topics.

Assessments:

- Quizzes
- Discussion
- Applications
- Final Project
- Self-Assessments

Required Equipment & Materials:

- Various textbooks

Transferability:

- *Required course for:* Criminal Justice - Corrections, Criminal Justice - Policing
- *External Transfer Equivalent at:* Concordia University of Edmonton, University of Lethbridge

CSP1150 – MEDICAL TERMINOLOGY/ANATOMY & PHYSIOLOGY

Offered in the Fall semester

Delivery Method: Online asynchronous

Total Hours: 45

College Credits: 3

High School Credits: 5

Pre-Requisites: None

Materials Cost: \$100 (approx.)

Course Description:

This course covers the study of prefixes, suffixes and word roots from which most medical terms are derived, taught in combination with anatomy and physiology, to understand the structure and function of organs and systems in the human body.

Course Outcomes:

1. Understanding of basic human anatomy and physiology and related word elements.
2. Correlate medical words to radiographic (by drawing body structures), surgical and diagnostic information.
3. Competent pronunciation and spelling of medical words and medical abbreviations to facilitate computer communication skills (oral and written) necessary in a medical setting.
4. Increased awareness of common disease processes, treatment and basic pharmacology.
5. Transfer of medical word building skills to hospital and medical clinic setting.

Assessments:

- Discussions
- Exams
- Quizzes
- Case Studies
- Final Exam

Required Equipment & Materials:

- Various textbooks

Transferability:

- *Required course for:* Massage Therapy, Medical Device Reprocessing, Unit Clerk
- *External Transfer Equivalent at:* University of Lethbridge

DCM1164 - INTRODUCTION TO DESIGN SOFTWARE AND PHOTOGRAPHY

Offered in the Fall semester

Delivery Method: Online asynchronous

Total Hours: 68

College Credits: 3

High School Credits: 5

Pre-Requisites: None

Materials Cost: \$100 software (approx.)

Course Description:

An introduction to design software and DSLR camera functions to develop skills that allow for production of still visuals used in the media. Use of design software covers effective file management, desktop publishing and basic layout techniques in creating various documents. An emphasis on photographic depth of field, subjects in motion, proper lighting techniques and editing images.

Course Outcomes:

1. Demonstrate basic file management.
2. Use desktop publishing and graphics programs.
3. Demonstrate basic layout techniques in creating various documents.
4. Produce still images to accommodate depth of field.
5. Demonstrate techniques to capture subjects in motion.
6. Apply lighting techniques to taking photographs.
7. Edit still images in industry standard software.

Assessments:

- Software Assignments
- Lab Exercises

Required Equipment & Materials:

- Adobe Creative Suite Software
- DSLR Camera

Transferability:

- *Required course for:* Digital Communications and Media
- *External Transfer Equivalent at:* No transfer opportunities offered at this time.

DCM1167 – MARKETING FUNDAMENTALS FOR MEDIA

Offered in the Winter semester

Delivery Method: Online asynchronous

Total Hours: 45

College Credits: 3

High School Credits: 5

Pre-Requisites: None

Materials Cost: None

Course Description:

An introduction to the principles, tools and techniques used in marketing, with a specific focus on public relations and advertising. Emphasis is on identifying communication opportunities, choosing target audiences and using social media, news media and advertising platforms to implement campaigns.

Course Outcomes:

1. Identify the components of advertising and public relations, under the marketing framework.
2. Explain consumer behaviour and how marketing, advertising and public relations factors influence behaviour.
3. Identify research methods and appropriate data analysis to guide strategic decision-making.
4. Describe communication pathways and tools used to implement advertising and public relations strategies.
5. Prepare an integrated strategy using advertising and communication methods.

Assessments:

- Online Discussions & Activities
- Unit Quizzes
- Projects-Based Assignments

Required Equipment & Materials:

- None

Transferability:

- *Required course for:* Digital Communications and Media
- *External Transfer Equivalent at:* No transfer opportunities offered at this time.

ECE1151 - HEALTH, NUTRITION AND SAFETY

Offered in the Fall semester

Delivery Method: Online asynchronous

Total Hours: 45

College Credits: 3

High School Credits: 5

Pre-Requisites: None

Materials Cost: \$135 (approx.)

Course Description:

This course provides content specifically focused on the wellness of young children and those who care for them in early childhood education programs. The course content focuses on basic principles of health and well-being, nutrition through implementation of the Canada Food Guide, and safety issues pertaining to early childhood.

Course Outcomes:

1. Display basic principles and practices that support a wellness lifestyle for yourself and children in your care.
2. Identify government regulations and how they ensure the maintenance of a healthy and safe environment for young children and adults in childcare settings and in-home settings.
3. Describe signs and symptoms of childhood diseases, methods of preventing escalation and spread of infections, and ways of caring for those who are ill.
4. Demonstrate menu planning that accounts for the value of nutrients in foods, food safety measures, nutrition requirements for adults and children and the social/emotional and cultural implications of food.
5. Describe elements that can cause injuries, methods for avoiding injuries and possible responses in the event of injuries.
6. Describe the probable factors resulting in child abuse, detection signs and protocol for reporting suspected child abuse to appropriate authorities and agencies.

Assessments:

- Analysis
- Application Activities
- Midterm Exam
- Final Exam

Required Equipment & Materials:

- Textbook

Transferability:

- *Required course for:* Early Childhood Education
- *External Transfer Equivalent at:* Bow Valley College, Concordia University of Edmonton, University of Lethbridge

ECE1155 - INTRODUCTION TO EARLY CHILDHOOD EDUCATION

Offered in the Fall + Winter semesters

Delivery Method: Online asynchronous

Total Hours: 45

College Credits: 3

High School Credits: 5

Pre-Requisites: None

Materials Cost: \$105 (approx.)

Course Description:

This course covers the goals and essential components for successful preschool experiences. The historical, social and psychological influences that have shaped early childhood theory and practice through the years are also examined. Students will gain an insight into the role of the early childhood educator and will examine their own personal philosophy for early childhood work in light of current, appropriate child care practices.

Course Outcomes:

1. Define Early Childhood Education and identify resources which support quality child care.
2. Define, examine, identify and evaluate roles, responsibilities and traits of early childhood educators.
3. Identify the beliefs of 12 educators who have influenced Early Childhood Education.
4. Define the developmental interactionist philosophy and developmentally appropriate practice.
5. Identify indicators of quality in early learning and child care.
6. Define child development.
7. Identify the how the educator's image of the child can support the developmental needs of infants, toddlers and preschoolers.
8. Describe Erikson's theory of human development and Piaget's cognitive theory.
9. Describe current political and social/economic issues which impact the field of Early Childhood Education.
10. Formulate a personal philosophy of Early Childhood Education which supports current beliefs about children's developmental needs and illustrates developmentally appropriate practice.

Assessments:

- Presentation
- Discussions
- Case Study
- Assignments

Required Equipment & Materials:

- Various textbooks

Transferability:

- *Required course for:* Early Childhood Education
- *Approved Elective for:* Educational Assistant
- *External Transfer Equivalent at:* Bow Valley College, Concordia University of Edmonton, The King's University

EDU1153 - FOUNDATIONS OF EDUCATIONAL ASSISTANCE

Offered in the Fall semester

Delivery Method: Online asynchronous

Total Hours: 45

College Credits: 3

High School Credits: 5

Pre-Requisites: None

Materials Cost: None

Course Description:

This course is an introduction to the professional behaviours and attitudes that are required by the Educational Assistant in the school system. Emphasis will be on the government's special education standards in the schools, the coding classification for students with disabilities, the philosophy and practice of inclusion, the legal and ethical issues concerning children with disabilities and the roles and responsibilities of the Educational Assistant in supporting students with disabilities under the guidance of the teacher. Included is an overview of the various developmental disabilities/delays and their characteristics.

Course Outcomes:

1. Explain the importance of the development of our schooling systems from a historical point of view.
2. Identify the role of the educational assistant in a variety of situations.
3. Explain their personal philosophy of education.
4. Define professionalism as it relates to assistants and educational institutions.
5. Define disability generally and terms associated with the seven disability categories.
6. Identify the developmental consequences of the seven disability categories from an educational perspective.
7. Write about one disability, its developmental consequences and the educational strategies recommended by research.

Assessments:

- Discussions
- Quizzes
- Journals
- Assignments

Required Equipment & Materials:

- None

Transferability:

- *Required course for:* Educational Assistant
- *External Transfer Equivalent at:* No transfer opportunities offered at this time.

ENG1150 - COMPOSITION

Offered in the Fall + Winter semesters

Delivery Method: Online asynchronous

Total Hours: 45

College Credits: 3

High School Credits: 5

Pre-Requisites: None

Materials Cost: None

Course Description:

The first-year composition course provides students with a solid grounding in the concepts and strategies of academic writing. As they read and analyze texts from a range of disciplines, students will learn to write discourse that reflects the expectation of their specific fields of study. The course will focus on processes that help students develop their thinking with evidence and present their ideas in a clear prose style.

Course Outcomes:

1. Identify and explain how an academic writer establishes authority.
2. Identify and analyze kinds of rhetorical choices an academic author makes within a particular discipline.
3. Differentiate between form and content, style and voice, subjective and objective discourse.
4. Use library and electronic research strategies to locate information.
5. Read, summarize and abstract information from essays, articles and books.
6. Write documents that successfully incorporate academic research writing strategies.
7. Write research prose that develops an academic claim anchored by source material and follows APA format and documentation guidelines (or another appropriate format system).
8. Demonstrate control over features such as syntax, grammar, punctuation, usage and spelling.
9. Write and edit documents to enhance readability, coherence, clarity, conciseness, unity and tone.

Assessments:

- Quizzes & Activities
- Assessments
- Essays

Required Equipment & Materials:

- None

Transferability:

- *Required course for:* Interior Design Technology, Natural Resource Compliance, Bachelor of Nursing, Practical Nurse, Renewable Resource Management, Therapeutic Recreation Gerontology, Agriculture Sciences, Child and Youth Care, Criminal Justice - Corrections, Criminal Justice - Policing, Early Childhood Education, Environmental Assessment and Restoration
- *Approved Elective for:* General Arts and Science, Exercise Science, Educational Assistant
- *External Transfer Equivalent at:* Athabasca University, Bow Valley College, College of the Rockies, Concordia University of Edmonton, King's University, Medicine Hat College, Mount Royal, Northern Lakes College, SAIT, University of Alberta, University of Lethbridge, University of Regina

ENG1159 - WRITING FOR THE WORKPLACE

Offered in the Fall + Winter semesters

Delivery Method: Online asynchronous

Total Hours: 45

College Credits: 3

High School Credits: 5

Pre-Requisites: None

Materials Cost: \$100 (approx.)

Course Description:

An introduction to effective writing and communication skills for the workplace. Emphasis on creating a variety of writing applications targeting specific audiences and purpose using writing conventions that address not only the workplace but also post-secondary level writing that may include formatting and citation standards such as APA. Effective sentence structure, research, critical thinking and analytical skills are incorporated into the curriculum.

Course Outcomes:

1. Choose appropriate channels for effective communication that apply to various audiences, purposes, formats and styles.
2. Apply research skills that contribute to written documents and other forms of communication.
3. Plan, organize and write professional documents that reflect current workplace standards.
4. Demonstrate critical thinking and analytical skills necessary for effective writing and communication in the work place.
5. Write error-free sentences that demonstrate readability, clarity, conciseness and appropriate tone.

Assessments:

- Quizzes
- Exam
- Discussions
- Reports
- Correspondence

Required Equipment & Materials:

- Textbook

Transferability:

- *Required course for:* Interior Design, Massage Therapy, Medical Device Reprocessing, Unit Clerk, Administrative Office Professional, Architectural Animation Technology, Business Administration, Computer Information Technology, Exercise Science
- *Approved Elective for:* General Arts and Science
- *External Transfer Equivalent at:* Athabasca University, Bow Valley College, The King's University, SAIT, University of Lethbridge, University of Alberta

GEO1166 – PHYSICAL GEOLOGY

Offered in the Fall + Winter semesters

Delivery Method: Online asynchronous

Total Hours: 75

College Credits: 3

High School Credits: 5

Pre-Requisites: None

Materials Cost: \$150 (approx.)

Course Description:

An introduction to the study of physical geology through the exploration of the dynamic forces that shape the Earth.

Course Outcomes:

1. Identify 15 common minerals in hand specimen using physical properties and field tests.
2. Identify 15 common rocks in hand specimen using physical properties and field tests.
3. Describe the origins, compositions and morphologies of common landforms from volcanism, intrusive igneous activity, karst, mass wasting, streams, glaciers and wind.
4. Identify the common landforms in topographic maps, bedrock geology maps, surficial geology maps, aerial photographs and in the field.
5. Identify and describe varied types of geologic structures of joints, faults and folds in lab and field settings.
6. Describe the origin, nature and hazardous effects of earthquakes.
7. Describe and explain the parts of the earth's interior and the basic tenets of the theory of plate tectonics, including the types of plate boundaries, their motions and their consequences.

Assessments:

- Lab/Field Trip Assignments
- Quizzes
- Exams

Required Equipment & Materials:

- Rocks and minerals kit

Transferability:

- *Required course for:* Natural Resource Compliance, Renewable Resource Management, Environmental Assessment and Restoration
- *External Transfer Equivalent at:* Athabasca University, King's University, MacEwan University, Medicine Hat College, University of Lethbridge, University of Regina



This course is included in the lineup of PEAKS Campus Collegiate programming.

HSP1151 - FAMILY SYSTEMS AND DEVELOPMENT

Offered in the Fall semester

Delivery Method: Online asynchronous

Total Hours: 45

College Credits: 3

High School Credits: 5

Pre-Requisites: ENG 20-1 or ENG 20-2

Materials Cost: \$75 (approx.)

Course Description:

This course is an introduction to the family as a dynamic system. The phases of family development are presented and discussed. An examination of family dynamics and issues within families are covered.

Course Outcomes:

1. Define families in Canada using foundational theories and apply tools to study families.
2. Describe and analyze trends and characteristics of Canadian families from historical and current perspectives.
3. Examine personal family of origin impacts on family relationships, functioning and professional (human services) interactions.
4. Identify and explain ecological influences on the family life cycle and describe resulting impacts on tasks and roles within the family.
5. Identify family and individual strengths.
6. Analyze how common family issues impact the family life cycle.

Assessments:

- Quizzes
- Application Assignments
- Discussions

Required Equipment & Materials:

- Textbook

Transferability:

- *Required course for:* Child and Youth Care, Educational Assistant
- *External Transfer Equivalent at:* No transfer opportunities offered at this time.

IDM1179 - DESIGN FUNDAMENTALS

Offered in the Fall semester

Delivery Method: Online asynchronous

Total Hours: 60

College Credits: 3

High School Credits: 5

Pre-Requisites: Math 20-2, 70% or better

Materials Cost: \$125 (approx.)

Course Description:

This course provides an overview of the basic elements and principles of design. Understanding of the human-built environment is explored creatively using two- and three-dimensional problem-solving techniques. Space, form and context are analyzed and applied to various design challenges.

Course Outcomes:

1. Identify the elements and principles of design including theory and practical application.
2. Explore creativity within manipulation of elements and principles of design integral to human-built environment design.
3. Apply elements and principles of design through projects and exercises.
4. Develop creative problem solving.
5. Demonstrate a variety of presentation techniques and appropriate layout of work.

Assessments:

- Software Assignments
- Lab Exercises

Required Equipment & Materials:

- Sketch Up Pro and Enscape software programs
- Camera (phone)

Transferability:

- *Required course for:* Architectural Animation Technology, Interior Design Technology
- *External Transfer Equivalent at:* University of Lethbridge

INS1155 - INTRODUCTION TO INDIGENOUS STUDIES

Offered in the Fall + Winter semesters

Delivery Method: Online asynchronous

Total Hours: 45

College Credits: 3

High School Credits: 5

Pre-Requisites: None

Materials Cost: \$125 (approx.)

Course Description:

An exploration of indigeneity and what it means to be indigenous in Canada. Students apply indigenous perspectives in areas of the environment, social issues, aesthetics, and history and participate in reflective practice and community building.

Course Outcomes:

1. Demonstrate awareness of cultural diversity as a means of enhancing interpersonal relations and self-development.
2. Demonstrate knowledge of major events concerning Indigenous (First Nations, Métis and Inuit) history in Canada from pre-contact to present.
3. Demonstrate knowledge of political and legal processes (i.e. treaties, legislation) and government program/initiatives relating to Indigenous peoples territory/land, culture and language.
4. Demonstrate understanding of the root causes of political, legal, economic, justice/criminal, social and health issues faced by Indigenous peoples.
5. Demonstrate critical analysis of current events within a cross-cultural and historical context through written and verbal arguments.
6. Demonstrate ability to carry out original research and apply to an issue raised in class or through the readings.

Assessments:

- Activities
- Journals
- Quizzes

Required Equipment & Materials:

- Various textbooks

Transferability:

- *Required course for:* Bachelor of Nursing
- *Approved Elective for:* Bachelor of Agriculture Science, Criminal Justice - Corrections, Criminal Justice - Policing, Business Administration, Educational Assistant
- *External Transfer Equivalent at:* Athabasca University, Bow Valley College, Mount Royal University, University of Alberta, University of Calgary, University of Lethbridge, University of Regina

LAW1150 - ENVIRONMENTAL LAW

Offered in the Fall semester

Delivery Method: Online asynchronous

Total Hours: 45

College Credits: 3

Suggested CTS Courses: LGS2030, ENS1040, ENS2040, ENS2050, ENS3050

Pre-Requisites: None

Materials Cost: \$110 (approx.)

Course Description:

An introduction to the sources of Canadian environmental law and legal frameworks relevant to Canadian and global environmental issues. Emphasis will be placed on applicable federal and provincial acts and legislation designed to protect the environment or provide regulatory frameworks for land use planning and mitigation.

Course Outcomes:

1. Be conversant with environmental law issues, both Canadian and global.
2. Analyze applicable environmental legislation at the provincial and federal level.
3. Describe legal principles specific to environmental law.
4. Know the difference between the application of environmental statutes, regulations and guidelines.
5. Develop an appreciation of the impact of technology, economics, politics and social/cultural differences related to the creation and enforcement of environmental law.
6. Recognize the realm of areas environmental law impacts.
7. Interpret historical case law related to the environment.
8. Identify the concepts related to aboriginal environmental law.

Assessments:

- Assignments
- Presentations
- Exams

Required Equipment & Materials:

- Textbook

Transferability:

- *Required course for:* Renewable Resource Management, Environmental Assessment and Restoration,
- *External Transfer Equivalent at:* No transfer opportunities offered at this time.



This course is included in the lineup of PEAKS Campus Collegiate programming.

LAW1177 - INTRODUCTION TO PROCEDURAL LAW IN CANADA

Offered in the Fall semester

Delivery Method: Online asynchronous

Total Hours: 45

College Credits: 3

High School Credits: 5

Pre-Requisites: None

Materials Cost: \$125 (approx.)

Course Description:

An exploration of the Criminal Code, Corrections and Conditional Release Act and other Federal Statutes focusing on statute law, including interpreting, understanding and applying criminal procedural requirements. The Criminal Code, Corrections and Conditional Release Act, Youth Criminal Justice Act, Controlled Drugs and Substances Act, and the Charter of Rights and Freedoms are examined with emphasis on offence classification, arrest, release, use of force, and self defence provisions. Case law will also be reviewed to emphasize the materials covered.

Course Outcomes:

1. Describe and navigate the structure of statutes, and the rules for locating definitions of words and phrases as part of statute information in Federal Acts.
2. Differentiate between and explain the sources of law.
3. Describe the impact of the Charter of Rights and Freedoms on Canadian criminal and correctional law.
4. Explain the basic elements and parties to the offence which must be proven in any criminal, quasi-criminal and extrajudicial proceedings.
5. Classify offences according to the criminal code, the CCRA and other federal and provincial legislation.
6. Explain the law and defenses relating to the use of force contained in the Criminal Code and CCRR.
7. Explain statutory powers of arrest and release authorities for policing.
8. Explain the arrest, search and seizure and discipline protocols from a correctional institution.

Assessments:

- Exams
- Discussions
- Case Studies

Required Equipment & Materials:

- Textbook

Transferability:

- *Required course for:* Criminal Justice - Corrections, Criminal Justice - Policing
- *External Transfer Equivalent at:* No transfer opportunities offered at this time.

MKT1152 – COMMODITY MARKETING

Offered in the Fall semester

Delivery Method: Online asynchronous

Total Hours: 45

College Credits: 3

High School Credits: 5

Pre-Requisites: Grade 11/12

Materials Cost: None

Course Description:

An overview of the alternatives available in the marketing of agricultural commodities. Topics include the role of futures markets, the mechanics of futures trading, the use of futures market to hedge, and the interpretation of market information.

Course Outcomes:

1. Define the role of futures markets in commodity supply chains and determining commodity prices.
2. Identify factors which influence upside and downside price risk.
3. Identify mechanics of futures contracts, trading futures, and interpret data provided by trading institutions.
4. Explain basis, factors that may affect it, and how basis relates to local cash prices.
5. Apply principles of hedging to manage price risk.
6. Apply principles of hedging to manage currency risk.
7. Apply principles of futures options to manage price risk

Assessments:

- Problem Sets
- Exams
- Online Activities

Required Equipment & Materials:

- None

Transferability:

- *Required course for:* Agriculture Sciences
- *External Transfer Equivalent at:* University of Lethbridge



This course is included in the lineup of Southern Alberta Collegiate Institute programming.

MTH1150 – ENGINEERING MATH I

Offered in the Fall semester

Delivery Method: Online asynchronous

Total Hours: 90

College Credits: 3

High School Credits: 5

Pre-Requisites: Math 20-2, 70% or better

Materials Cost: \$80 (approx.)

Course Description:

An introduction to the mathematical concepts required for the engineering technologies in preparation for calculus. Topics include unit analysis and unit conversion, the Cartesian coordinate plane, algebraic equations, trigonometric functions, and problem-solving skills. Mathematical concepts will be applied to physical problems including vector analysis, surveying applications, friction, optical instruments and kinematics. Introductory calculus topics include limits, slope and area under the curve.

Course Outcomes:

1. Solve basic algebra equations and arithmetic questions involving fractions, decimals, signed numbers, exponents and order of operations with and without the aid of a calculator.
2. Solve questions in Analytical Geometry and the Cartesian coordinate plane involving distances, slopes and circles.
3. Graph various functions in the Cartesian Plane and determine some of their important characteristics including symmetry, domain, range, scaling and shifting.
4. Solve all types of algebra problems involving factoring quadratics, rational expressions, trigonometric functions, and exponential and logarithmic functions.
5. Apply vector analysis to dynamic and static engineering problems.
6. Apply Newton's Laws to engineering applications.
7. Apply work, friction and heat energy principles to engineering applications.
8. Solve for derivatives using the definition to establish a strong connection between limits and derivatives.
9. Apply the principles of optics to engineering instruments.
10. Solve problems involving limits and explain their connection to the two main operations in Calculus: differentiation and integration.
11. Calculate derivatives using rules of differentiation.

Assessments:

- Exams
- Assignments
- Quizzes

Required Equipment & Materials:

- Textbook

Transferability:

- *Required course for:* Civil Engineering Technology, Engineering Technology, Survey and Geospatial Engineering
- *External Transfer Equivalent at:* SAIT, University of Lethbridge

PSC1165 - CANADIAN GOVERNMENT

Offered in the Fall semester

Delivery Method: Online asynchronous

Total Hours: 45

College Credits: 3

High School Credits: 5

Pre-Requisites: None

Materials Cost: \$125 (approx.)

Course Description:

This course provides a structural overview of the federal system of government in Canada by way of analysing its major institutions. The course examines the Constitution and its implications for modern life, federal/provincial jurisdiction, the dynamics of changing relationships between levels of government, and the basics of political parties, the media, bureaucracy and the judicial system will be examined.

Course Outcomes:

1. Analyze events within the context of the larger political system.
2. Diagram the basic structures of federalism in Canada and analyze their implications for government relations and for citizen-state relations.
3. Trace the historical development of our basic systems of government.
4. Examine how the institutions of Canadian government reflect ideas and structures adopted from British, American, and uniquely Canadian experiences.
5. Research governments and politics using new and conventional resources.
6. Examine the organization of the major institutions of government in Canada.
7. Analyze the development of Canada's constitution.
8. Recognize pluralism and multi-cultural societies.
9. Recognize opportunities for civic participation.

Assessments:

- Quizzes
- Activities & Projects
- Exams

Required Equipment & Materials:

- Textbook

Transferability:

- *Approved Elective for:* Business Administration, Criminal Justice - Corrections, Criminal Justice - Policing, General Arts and Sciences
- *External Transfer Equivalent at:* Athabasca University, The King's University, MacEwan University, Mount Royal University, University of Alberta, University of Calgary, University of Lethbridge

PSY1160 - INTRODUCTION TO PSYCHOLOGY

Offered in the Winter semester

Delivery Method: Online asynchronous

Total Hours: 45

College Credits: 3

High School Credits: 5

Pre-Requisites: None

Materials Cost: \$100 (approx.)

Course Description:

This course gives students a basic understanding and overview of the field of psychology. Attention is given to the scientific method, biological factors, cognitive processes, learning, memory, intelligence, motivation, personality and social psychology. Developmental factors of the lifespan are explored along with the definition, and treatment of psychological disorders.

Course Outcomes:

1. Discuss schools of psychology and beginnings of psychology as a science.
2. Identify the relationship between physiology and behaviour.
3. Identify theories of personality formation and assessment.
4. Describe the developmental issues spanning the prenatal environment, newborn, adolescence, and early, middle and later adulthood.
5. List and describe the features and functions of the central and peripheral nervous system.
6. Define intelligence and identify intelligence testing instruments.
7. Explain short and long-term memory and how we remember and/or forget information.
8. Describe the principles of learning (classical, operant, and observational).
9. Explain social perception, attitudes, social influences, prejudice, and discrimination.
10. Define abnormal behaviour, its causes, and the various approaches to therapy.
11. Examine several different psychological disorders, how they manifest and appropriate interventions.
12. Define stress, its impact, and how we cope with it.

Assessments:

- Exams
- Quizzes
- Activities

Required Equipment & Materials:

- Textbook

Transferability:

- *Required course for:* Criminal Justice – Corrections, Criminal Justice – Policing, Bachelor of Nursing
- *Approved Elective for:* Business Administration, General Arts and Science
- *External Transfer Equivalent at:* Athabasca University, Bow Valley College, College of the Rockies, Concordia University of Edmonton, The King's University, MacEwan University, Medicine Hat, Mount Royal University, NorQuest, Northern Lakes College, SAIT, University of Alberta, University of Calgary, University of Lethbridge, University of Regina

RRM1197 - SPATIAL INFORMATION TECHNIQUES

Offered in the Fall + Winter semesters

Delivery Method: Online asynchronous

Total Hours: 75

College Credits: 3

Suggested CTS Courses: FOR1050, FOR2060, WLD1060

Pre-Requisites: None

Materials Cost: \$175 (approx.)

Course Description:

An introductory, skills-based approach to reading, interpreting and measuring various forms of spatial information. Emphasis is placed on the interpretation, measurement and analysis of topographic maps and aerial and satellite imagery.

Course Outcomes:

1. Describe common properties and features of maps, aerial photographs and imagery.
2. Calculate various measurements of distance, direction, height, area and volume using appropriate scales on maps, aerial photographs and imagery.
3. Determine map and ground locations using spatial coordinate systems such as Geographic Coordinate Systems (GCS), Universal Transverse Mercator (UTM), and Alberta Township System (ATS).
4. Create profiles of various topographic features.
5. Demonstrate navigation skills with standard field equipment.
6. Derive measurements from elevation data.
7. Describe common remote sensing techniques.

Assessments:

- Projects
- Lab Assignments
- Exams

Required Equipment & Materials:

- Various Textbooks
- Compass

Transferability:

- *Required course for:* Environmental Assessment and Restoration, Natural Resource Compliance, Renewable Resource Management
- *External Transfer Equivalent at:* No transfer opportunities available at this time.



This course is included in the lineup of PEAKS Campus Collegiate programming.

RRM2252 - WATER RESOURCES

Offered in the Fall + Winter semesters

Delivery Method: Online asynchronous

Total Hours: 75

College Credits: 3

Suggested CTS Courses: ENS2120, ENS3120, FOR1050

Pre-Requisites: None

Materials Cost: None

Course Description:

An applied approach to the introduction of hydrology, streamflow mechanics and hydrometric survey techniques. Emphasis is on hydrological data collection and analysis.

Course Outcomes:

1. Describe water scarcity issues and introduce water management strategies to address that issue.
2. Describe the hydrological cycle categorized into its input, output and storage components.
3. Delineate a watershed from a topographic map and interpret the runoff potential using various physical properties and runoff indices.
4. Conduct a comparative hydrograph analysis and interpret from it the influence of land use practices on runoff.
5. Apply multiple open channel flow equations to determine how channel geometry impacts its ability to convey water.
6. Manually measure and calibrate Manning equation parameters by conducting a field survey and using industry standard software.
7. Describe the fundamental components of the streamflow measurement process using various types of hydrometric equipment.
8. Compute channel discharge from hydrometric measurements obtained by various measurement methods.
9. Describe the methodology employed to measure discharge under numerous conditions.
10. Derive and apply a rating curve function to calculate discharge.

Assessments:

- Assignments
- Exams

Required Equipment & Materials:

- None

Transferability:

- *Required course for:* Environmental Assessment and Restoration, Renewable Resource Management
- *External Transfer Equivalent at:* No transfer opportunities available at this time.



This course is included in the lineup of PEAKS Campus Collegiate programming.

RRM2253 - SOIL RESOURCES

Offered in the Fall + Winter semesters

Delivery Method: Online asynchronous

Total Hours: 75

College Credits: 3

Suggested CTS Courses: AGR1050, AGR2120, AGR3120

Pre-Requisites: None

Materials Cost: \$100 (approx.)

Course Description:

This course covers the factors controlling formation, classification and fundamental properties of soils in Western Canada. Emphasis is on field and laboratory skills.

Course Outcomes:

1. Demonstrate field and laboratory skills in collecting and preserving soil samples.
2. Define the soil forming processes and explain how they influence the inherent properties and productivity potential of soils.
3. Define soil physical, chemical, and biological properties and demonstrate their relationship to management, conservation, and reclamation.
4. Classify soil according to The Canadian System of Soil Classification.
5. Apply the concepts of the Canadian System of Soil Classification to interpret soil maps and surveys for the purpose of soil management, conservation, and reclamation.
6. Demonstrate laboratory skills in analyzing fundamental soil properties and recording and reporting laboratory data.
7. Perform basic calculations of laboratory data related to soil properties and interpret the results for the purpose of determining soil productivity.

Assessments:

- Field Studies
- Quizzes
- Projects
- Exams

Required Equipment & Materials:

- Textbook

Transferability:

- *Required course for:* Environmental Assessment and Restoration, Renewable Resource Management
- *External Transfer Equivalent at:* No transfer opportunities available at this time.



This course is included in the lineup of PEAKS Campus Collegiate programming.

RSR1160 - RESEARCH AND WRITING FOR NEW MEDIA

Offered in the Fall semester

Delivery Method: Online asynchronous

Total Hours: 45

College Credits: 3

High School Credits: 5

Pre-Requisites: None

Materials Cost: None

Course Description:

An introductory course to professional research and writing for new media projects. Focus is on developing interesting, clear and original content as well as adapting information from other sources.

Course Outcomes:

1. Demonstrate professional level writing for new media.
2. Evaluate information with respect to its accuracy and content value.
3. Demonstrate research and interview skills to compile information from diverse sources.
4. Adapt provided written or verbal content for new media delivery.
5. Write original content for a client project.

Assessments:

- Research
- Writing
- Projects

Required Equipment & Materials:

- None

Transferability:

- *Required course for:* Multimedia Production
- *External Transfer Equivalent at:* University of Lethbridge

TRA1131 - INTRODUCTION TO THE TRADES

Offered in the Fall + Winter semesters

Delivery Method: Online asynchronous + on-campus labs

Total Hours: 75

College Credits: 3

High School Credits: 5

Pre-Requisites: None

Materials Cost: \$250 (approx.)

Course Description:

As an introductory course, students will explore and experience 12 trades including plumber, welder, carpenter, electrician, power line technician, wind turbine technician, automotive technician, heavy equipment technician, agricultural heavy equipment technician, parts technician, cook and baker. Students will participate in both online knowledge-based work complemented with a hands-on component to developing key skills in each specific trade. This course will develop students' appreciation for trades and give them a better understanding of their own aptitude and interests.

Course Outcomes:

1. Recognize their own aptitude and interests within the trades.
2. Demonstrate an introductory understanding of each individual trade.
3. Apply basic safety practices within each trade.
4. Apply knowledge of each trade skill set to lab situations.
5. Apply knowledge of tools to a lab situation.

Assessments:

- Quizzes
- Labs (*Nine Fridays throughout the semester - subject to change*)
- Portfolio

Required Equipment & Materials:

- Coveralls
- CSA-approved safety shoes/boots
- Safety glasses

Transferability:

- *Approved Elective for:* General Arts and Sciences
- *External Transfer Equivalent at:* No transfer opportunities offered at this time.



** This course is offered by the Southern Alberta Collegiate Institute and enrollment is limited to students attending one of the following divisions: Holy Spirit Catholic, Horizon, Palliser, Lethbridge, Livingstone Range and Westwind.*

TRA1132 - INTRODUCTION TO TRANSPORTATION TRADES

Offered in the Winter semester

Delivery Method: Online asynchronous + on-campus labs

Total Hours: 76

College Credits: 3

High School Credits: 5

Pre-Requisites: None

Materials Cost: \$250 (approx.)

Course Description:

Students will explore automotive, heavy-duty, agriculture equipment, and parts trades. Students will participate in both online knowledge-based work, complemented with a hands-on component to developing key skills in each specific trade. This course will develop students' appreciation for automotive, heavy-duty, agriculture equipment, and parts trades, giving them a refined understanding of their own aptitude and interests.

Course Outcomes:

1. Evaluate your own aptitude and interests within automotive, heavy-duty, agriculture equipment and parts trades.
2. Demonstrate awareness of automotive, heavy-duty, agriculture equipment and parts trades environments.
3. Apply safe work practices within automotive, heavy-duty, agriculture equipment and parts trades.
4. Apply knowledge of automotive, heavy-duty, agriculture equipment and parts trades occupational skill sets to lab situations.
5. Apply knowledge of tools to automotive, heavy-duty, agriculture equipment and parts trades.
6. Recognize the relationship between automotive, heavy duty, agriculture equipment and parts trades.

Assessments:

- Quizzes
- Labs (*Eight Fridays throughout the semester - subject to change*)
- Assignments
- Discussions
- Portfolio

Required Equipment & Materials:

- Coveralls
- CSA-approved safety shoes/boots
- Safety glasses

Transferability:

- *Approved Elective for:* General Arts and Sciences
- *External Transfer Equivalent at:* No transfer opportunities offered at this time.

TRA1133 - INTRODUCTION TO ELECTRICAL TRADES

Offered in the Fall semester

Delivery Method: Online asynchronous + on-campus labs

Total Hours: 60

College Credits: 3

High School Credits: 5

Pre-Requisites: None

Materials Cost: \$200 (approx.)

Course Description:

Students will explore electrical and wind turbine technician trades. Students will participate in online knowledge-based work, complemented with a hands-on component to developing key skills in each specific trade. This course will develop students' appreciation for electrical and wind turbine technician trades, giving them a refined understanding of their own aptitude and interests.

Course Outcomes:

1. Evaluate your own aptitude and interests within electrical and wind turbine technician trades.
2. Demonstrate awareness of electrical and wind turbine technician trades environments.
3. Apply safe work practices within electrical and wind turbine technician trades.
4. Apply knowledge of electrical and wind turbine technician trades occupational skill sets to lab situations.
5. Apply knowledge of tools to electrical and wind turbine technician trades.

Assessments:

- Quizzes
- Labs (*Eight Fridays throughout the semester - subject to change*)
- Assignments
- Discussions
- Portfolio

Required Equipment & Materials:

- Gloves
- CSA-approved safety shoes/boots
- Safety glasses

Transferability:

- *Approved Elective for:* General Arts and Sciences
- *External Transfer Equivalent at:* No transfer opportunities offered at this time.



** This course is offered by the Southern Alberta Collegiate Institute and enrollment is limited to students attending one of the following divisions: Holy Spirit Catholic, Horizon, Palliser, Lethbridge, Livingstone Range and Westwind.*

TRA1134 - INTRODUCTION TO CONSTRUCTION TRADES

Offered in the Fall semester

Delivery Method: Online asynchronous + on-campus labs

Total Hours: 70

College Credits: 3

High School Credits: 5

Pre-Requisites: None

Materials Cost: \$250 (approx.)

Course Description:

Students will explore carpentry, welding and pipetrades. Students will participate in both online knowledge-based work, complemented with a hands-on component to developing key skills in each specific trade. This course will develop students' appreciation for carpentry, welding, and pipetrades trades, giving them a refined understanding of their own aptitude and interests.

Course Outcomes:

1. Evaluate your own aptitude and interests within carpentry, welding and pipetrades.
2. Demonstrate awareness of carpentry, welding and pipetrades environments.
3. Apply safe work practices within carpentry, welding and pipetrades.
4. Apply knowledge of carpentry, welding and pipetrades occupational skill sets to lab situations.
5. Apply knowledge of tools to carpentry, welding and pipetrades.

Assessments:

- Quizzes
- Labs (*Eight Fridays throughout the semester - subject to change*)
- Assignments
- Discussions
- Portfolio

Required Equipment & Materials:

- Coveralls
- CSA-approved safety shoes/boots
- Safety glasses

Transferability:

- *Approved Elective for:* General Arts and Sciences
- *External Transfer Equivalent at:* No transfer opportunities offered at this time.

TRA1135 - INTRODUCTION TO CULINARY TRADES

Offered in the Winter semester

Delivery Method: Online asynchronous + on-campus labs

Total Hours: 74

College Credits: 3

High School Credits: 5

Pre-Requisites: None

Materials Cost: None

Course Description:

Students will explore the culinary field through different thematic culinary experiences. Students will participate in both online knowledge-based work, complemented with a hands-on component to developing key skills in each specific trade that are applicable to everyday life. This course will develop students' appreciation for culinary trades, refining their own skills, aptitude, and interests.

Course Outcomes:

1. Evaluate your own aptitude and interests within cooking and baking trades.
2. Demonstrate awareness of cooking and baking trades environments.
3. Apply safe work practices when cooking and baking.
4. Apply knowledge of cooking and baking trades occupational skill sets in lab situations.
5. Apply knowledge of equipment when cooking and baking

Assessments:

- Quizzes
- Labs (*Seven Fridays throughout the semester - subject to change*)
- Assignments
- Discussions
- Portfolio

Required Equipment & Materials:

- None

Transferability:

- *Approved Elective for:* General Arts and Sciences
- *External Transfer Equivalent at:* No transfer opportunities offered at this time.



** This course is offered by the Southern Alberta Collegiate Institute and enrollment is limited to students attending one of the following divisions: Holy Spirit Catholic, Horizon, Palliser, Lethbridge, Livingstone Range and Westwind.*

TRG1150 – INTRODUCTION TO THERAPEUTIC RECREATION

Offered in the Fall semester

Delivery Method: Online asynchronous

Total Hours: 45

College Credits: 3

High School Credits: 5

Pre-Requisites: None

Materials Cost: \$100 (approx.)

Course Description:

A foundational overview of the history, philosophy, concepts, and issues in the field of Therapeutic Recreation. Emphasis on the helping nature of the Recreation Therapist role and the importance of self-awareness within the profession. The importance of leisure activities and common barriers to recreation participation are discussed. Introductory information and discussion on a wide range of disabilities, medical conditions, and options for service delivery. Conceptual models of therapeutic service are explored.

Course Outcomes:

1. Describe the helping nature of the service provider role.
2. Describe the history, role, and function of therapeutic recreation.
3. Identify disabilities and barriers for individuals and apply the role of therapeutic recreation.
4. Identify values and beliefs conducive to providing effective service to people.
5. Define professionalism as it relates to providing services in the helping role.
6. Compare and contrast various therapeutic recreation conceptual models and recognize the importance of using a model in practice.
7. Compare and contrast various living option levels and the differences in the service delivery of therapeutic recreation.
8. Identify the purpose of a team approach and how to work within various healthcare teams.
9. Define issues that affect job related stress associated with the role of helper.

Assessments:

- Exams
- Volunteer Work
- Assignments

Required Equipment & Materials:

- Textbook

Transferability:

- *Required course for:* Therapeutic Recreation Gerontology
- *External Transfer Equivalent at:* University of Lethbridge, University of Regina

COLLEGIATE PROGRAMMING

Collegiates provide specialized programming in a particular subject area, in order to provide students clearer pathways into post-secondary education and careers in their chosen field.

Lethbridge College, and its lineup of Dual Credit courses, are part of two unique Collegiates founded in 2023 with various Zone 6 school divisions.



PEAKS CAMPUS COLLEGIATE

Crownest Pass

The PEAKS Campus Collegiate enables students to embark on environmental science careers connected to educational pathways in the Southern Alberta economy and ecosystem, through an innovative partnership between Livingstone Range School Division, Lethbridge College and industry partners.

Eligibility:

While the PEAKS Campus Collegiate focuses on supporting students within the Livingstone Range School Division, courses are open to all Zone 6 Dual Credit partners.

Course Offerings:

- BIO1167 - Botany
- BIO1168 - Zoology
- BIO1172 - Ecology
- GEO1166 - Physical Geology
- LAW1150 - Environmental Law
- RRM1197 - Spatial Information Techniques
- RRM2252 - Water Resources
- RRM2253 - Soil Resources

Students participating in PEAKS courses have additional opportunities to engage in experiential learning, through specific labs hosted by college faculty at PEAKS facilities.

Facility:

The existing PEAKS Campus will undergo renovations Fall 2024 to expand programming opportunities. A custom, state-of-the-art mobile classroom currently in use also allows students to participate in labs anywhere across Southern Alberta.



SOUTHERN ALBERTA COLLEGIATE INSTITUTE

Lethbridge College



The Southern Alberta Collegiate Institute (SACI) is a unique collaborative partnership of six school divisions, Lethbridge College and two non-profit organizations to give youth across Southern Alberta the opportunity to explore career pathways through exploratory and dual credit programming in Trades, Agriculture and Healthcare sectors.

Eligibility

Only students from the following school divisions are eligible to participate in SACI programming:

- Holy Spirit
- Horizon
- Lethbridge
- Livingstone Range
- Palliser
- Westwind

Course Offerings:

The following Dual Credit courses are reserved for SACI partners:

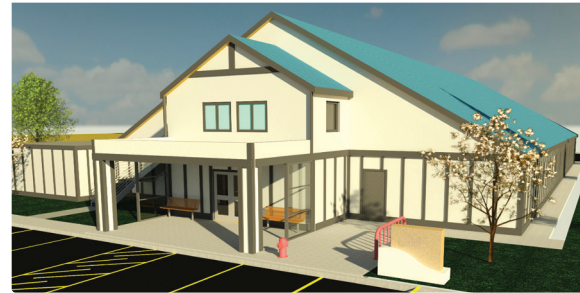
- AGS1150 - Foundations of Agriculture
- TRA1131 - Introduction to the Trades
- TRA1132 - Introduction to Transportation Trades
- TRA1133 - Introduction to Electrical Trades
- TRA1134 - Introduction to Construction Trades
- TRA1135 - Introduction to Culinary Trades

Students enrolled in SACI courses participate in a combination of online asynchronous learning and hands-on labs in our state-of-the-art facilities.

Additional opportunities are available outside SACI-specific courses, with a pre-employment trades offering currently pending approval as well.

Facility:

While programming currently takes place in existing shop and lab spaces on-campus, plans are underway to construct a facility entirely for SACI programming, to be completed in the 2024/2025 academic year.



BE READY.

ASSIGNED PSI CODES

Most of our Dual Credit courses are assigned a Post-Secondary Institution (PSI) Code.

Lethbridge College Course Name	Alberta Ed PSI Code
AGS1100 - Foundations of Agriculture	PSI3319
AGS1150 - Agriculture Finance	PSI3282
BIO1156 - Wellness & Health Issues	PSI3095
BIO1160 - Anatomy and Physiology I	PSI3005
BIO1167 - Botany	PSI3294
BIO1168 - Zoology	PSI3320
BIO1172 - Ecology	PSI3293
BIO1175 - Animal Science	PSI3242
BIO1195 - Introduction to Aquaponic Principles	PSI3292
BUS1170 - Introduction to Management	PSI3014
BUS1177 - Entrepreneurship	PSI3172
CAD1160 - Graphic Communications	PSI3274
CJP1160 - Introduction to the Criminal Justice System	PSI3100
CMM1185 - The Principles of Animation	PSI3280
COM1162 - Interpersonal Relationships & Communication	PSI3171
COM1165 - Public Safety Communications/Interpersonal Relations	PSI3296
CSP1150 - Medical Terminology/Anatomy & Physiology	PSI3190
DCM1164 - Introduction to Design Software and Photography	PSI3276
DCM1167 - Marketing Fundamentals for Media	PSI3277
ECE1151 - Health, Nutrition and Safety	PSI3074
ECE1155 - Introduction to Early Childhood Education	PSI3125
EDU1153 - Foundations of Educational Assistance	PSI3297
ENG1150 - Composition	PSI3082
ENG1159 - Writing for the Workplace	PSI3099
GEO1166 - Physical Geology	PSI3243
HSP1151 - Family Systems and Development	PSI3295
IDM1179 - Design Fundamentals	PSI3275
LAW1150 - Environmental Law	<i>*aligns to various CTS courses</i>
LAW1177 - Intro to Procedural Law in Canada	<i>*pending approval</i>
INS1155 - Introduction to Indigenous Studies	PSI3067
MKT1152 - Commodity Marketing	PSI3241
MTH1150 - Engineering Math I	PSI3290
PSC1165 - Canadian Government	PSI3150
PSY1160 - Introduction to Psychology	PSI3001
RRM1197 - Spatial Information	<i>*aligns to various CTS courses</i>
RRM2252 - Water Resources	<i>*aligns to various CTS courses</i>
RRM2253 - Soil Resources	<i>*aligns to various CTS courses</i>
RSR1160 - Research and Writing for New Media	PSI3291
TRA1131 - Introduction to the Trades <i>*reserved for select divisions</i>	PSI3310
TRA1132 - Introduction to Transportation Trades <i>*reserved for select divisions</i>	PSI3315
TRA1133 - Introduction to Electrical Trades <i>*reserved for select divisions</i>	PSI3318
TRA1134 - Introduction to Construction Trades <i>*reserved for select divisions</i>	PSI3316
TRA1135 - Introduction to Culinary Trades <i>*reserved for select divisions</i>	PSI3317
TRG1150 - Introduction to Therapeutic Recreation	PSI3314

> HAVE QUESTIONS?

For questions on Dual Credit programming, please contact the following departments:

PAIGE THORNBOROUGH

Coordinator, Youth Initiatives

paige.thornborough@lethbridgecollege.ca • 403.320.3202 Ext. 5355

ADMISSIONS

admissions@lethbridgecollege.ca • 403.382.6958

CAREER + ACADEMIC ADVISING

advisor@lethbridgecollege.ca • 403.320.3366

LEARNING CAFE

learningcafe@lethbridgecollege.ca • 403.382.6952

ACCESSIBILITY SERVICES

accessibilityservices@lethbridgecollege.ca • 403.320.3202 Ext.5400

LEARN MORE AT

lethbridgecollege.ca/[dual-credit](https://lethbridgecollege.ca/dual-credit)

